

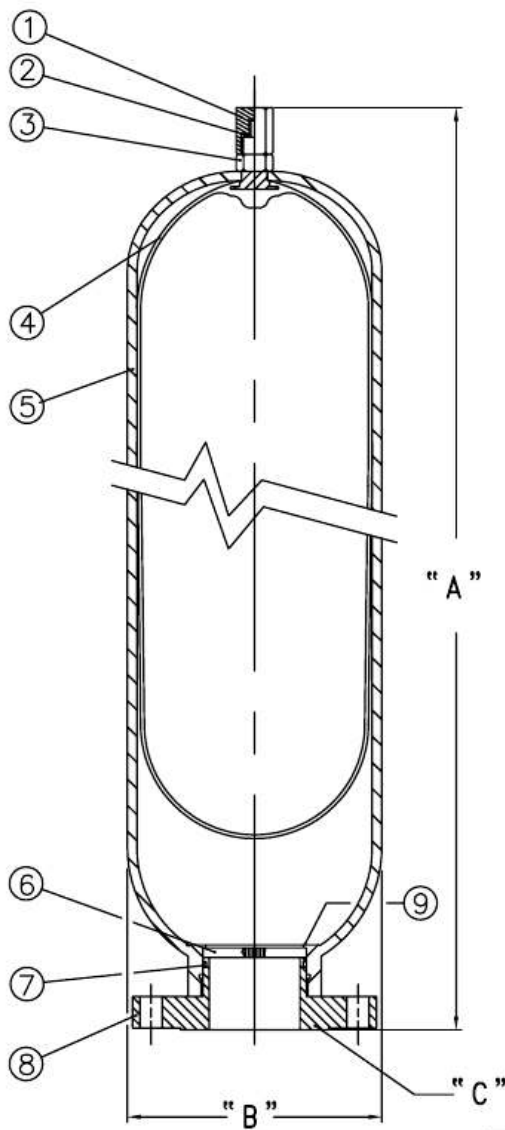
DATA SHEET BSA-04

BOTTOM REPAIRABLE SURGE SUPPRESSOR

500 psi

Nominal Size (Gallons)	Model Number	"A" OAH. (In.)	"B" Dia. (In.)	"C" Fluid Port Connector	Est. Dry Weight (Lbs.)	Design Pressure (psig.)
2.5	2.5BSA-50	19-1/4	8-5/8	3"-300# ANSI FLANGE	59	500
5.0	5.0BSA-50	29-1/2	8-5/8	3"-300# ANSI FLANGE	79	500
10	10BSA-50	50-5/8	8-5/8	3"-300# ANSI FLANGE	119	500

- ALL WETTED PARTS ARE STAINLESS STEEL OR EPOXY COATED CARBON STEEL.
- 500 PSI DESIGN PRESSURE WITH A 4X SAFETY FACTOR.
- BLADDER MATERIAL IS AROMATIC RESISTANT BUNA-N; OTHER COMPOUNDS ARE AVAILABLE.
- ASME CODED, SECTION VIII, DIV. 1.



PARTS LIST:

Item	Qty	Description
1	1	VALVE GUARD
2*	1	DYNA SEAL
3	1	LOCKNUT
4*	1	BLADDER ASSEMBLY
5	1	SHELL
6	1	SCREEN
7*	1	O-RING
8	1	FLANGE
9	1	RETAINING RING

*Recommended replacement parts.



BSA-04/7-15-97



**young
engineering
manufacturing, inc.**

560 West Terrace Drive, San Dimas, California 91773-2914
Ph 909.394.3225 Fax 909.394.3006 Em yemi@youngeng.com