

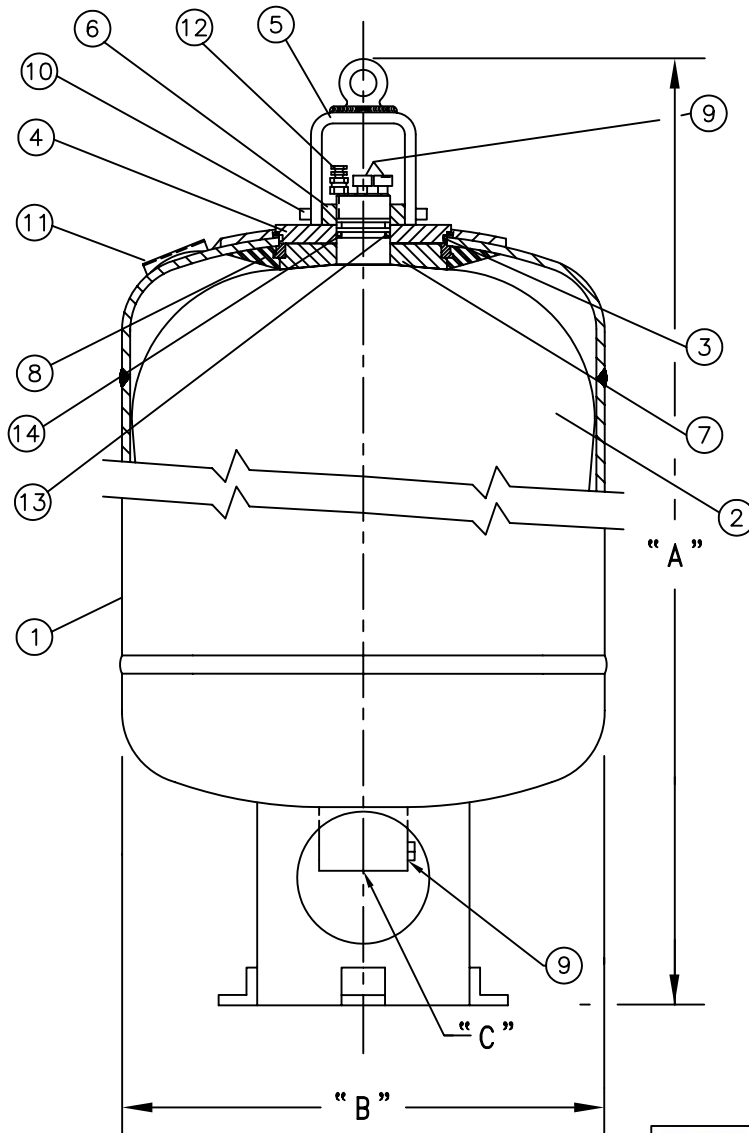
DATA SHEET BET-02

BLADDER EXPANSION TANK

175psi

Nominal Size (Gallon)	Model Number	"A" APPR. OAH. (In.)	"B" Dia. (In.)	"C" Fluid Port Connector	Est. Dry Weight (Lbs.)	Design Pressure (psig.)
25	25BET-17	45-1/2	22	3" NPT	300	175
40	40BET-17	53-1/4	22	3" NPT	361	175
80	80BET-17	66-1/4	22	3" NPT	534	175
100	100BET-17	86-3/4	22	3" NPT	697	175
120	120BET-17	103-1/4	22	3" NPT	841	175
150	150BET-17	103-1/2	24	3" NPT	921	175

- FOR USE IN EXPANSION CHAMBER APPLICATION.
- 175 PSI DESIGN PRESSURE WITH A 4X SAFETY FACTOR.
- BLADDER MATERIAL IS AROMATIC RESISTANT BUNA-N.
- ASME CODED, SECTION VIII, DIV. 1.
- UL LISTED FOR FIRE PROTECTION



PARTS LIST:

Item	Qty	Description
1	1	SHELL ASS'Y
2*	1	BLADDER ASS'Y
3*	1	O-RING
4	1	PLATE, GAS END
5	1	VALVE GUARD ASS'Y
6	1	LOCKNUT
7	1	GAS PLUG
8	1	ANTI EXTRUSION RING
9	3	PIPE PLUG
10	4	SOCKET HEAD CAP SCREW
11	1	NAMEPLATE (ASME)
12	1	GAS VALVE
13*	1	O-RING
14*	1	BACK-UP RING

*Recommended replacement parts.

