

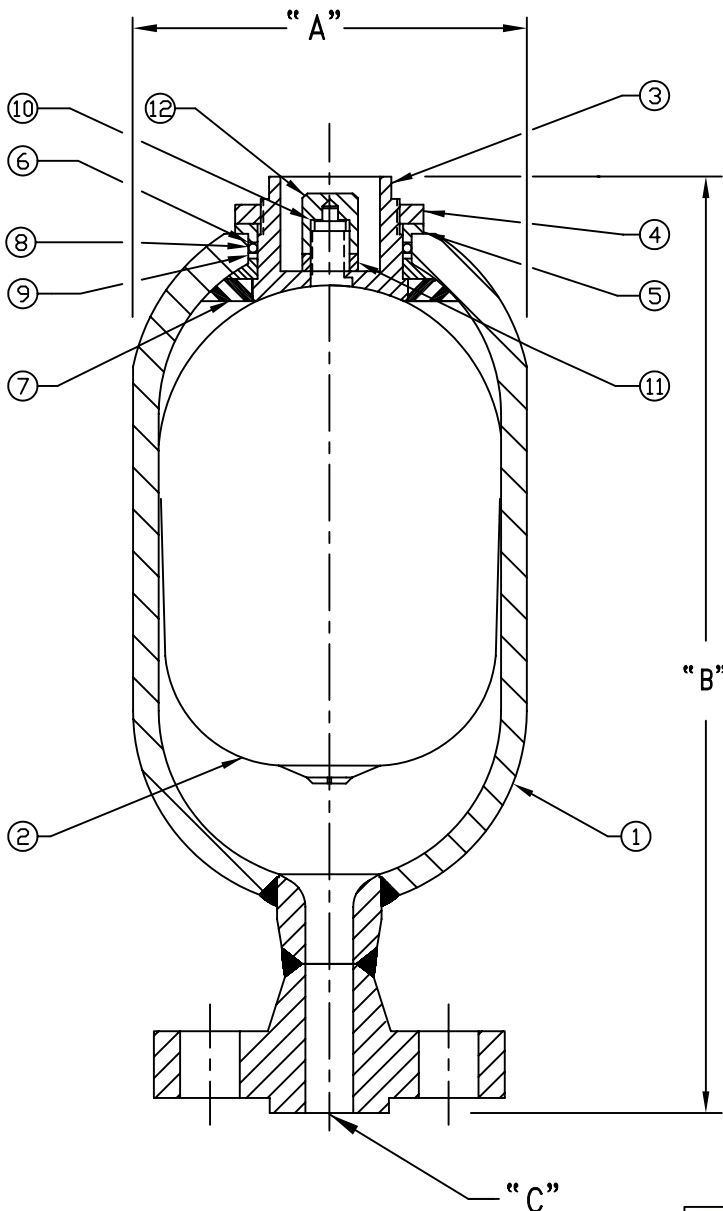
DATA SHEET AT-05

APPENDAGE TOP REPAIRABLE PULSATION DAMPENER

3000psi

Nominal Size (Cl)	Model Number	"A" Dia. (In.)	"B" OAH. (In.)	"C" Fluid Port Connector	Est. Dry Weight (lbs)	Design Pressure (psig)
60 (1 QUART)	60AT-3000C	4.50	12.50	1"-1500# RF FLANGE	20	3000

- ALL WETTED PARTS ARE STAINLESS STEEL AND EPOXY COATED CARBON STEEL.
- 3000 PSI DESIGN PRESSURE WITH A 4X SAFETY FACTOR PER ASME CODE.
- BLADDER MATERIAL IS AROMTIC RESISTANT BUNA-N; OTHER COMPOUNDS ARE AVAILABLE.



PARTS LIST:

Item	Qty	Description
1	1	SHELL
2 *	1	BLADDER ASS'Y
3	1	GAS END PLUG
4	1	LOCK NUT
5	1	SPACER
6	1	WASHER
7	1	ANTI-EXTRUSION RING
8 *	1	O-RING
9 *	1	BACK-UP RING
10 *	1	DYNA SEAL
11	1	JAM NUT
12	1	VALVE GUARD

*Recommended replacement parts.

