

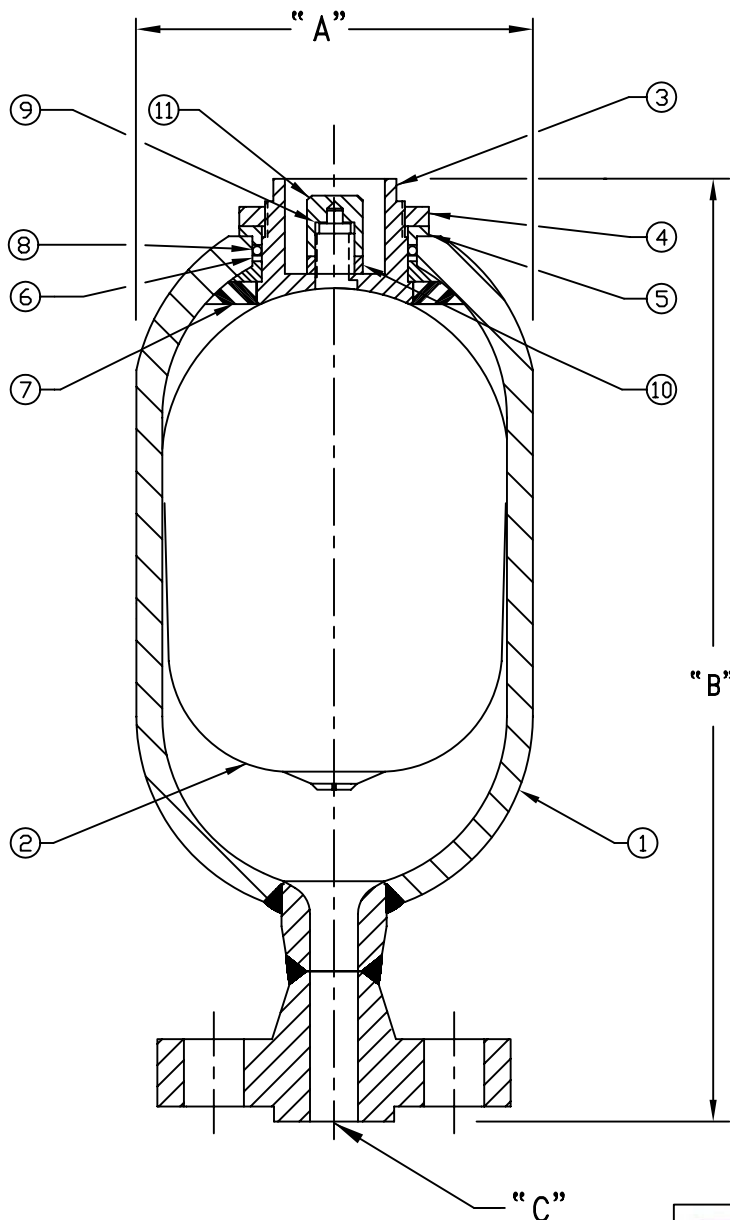
# DATA SHEET AT-02S

## APPENDAGE TOP REPAIRABLE PULSATION DAMPENER

1500psi

Nominal Size (Cl)	Model Number	"A" Dia. (In.)	"B" OAH. (In.)	"C" Fluid Port Connector	Est. Dry Weight (lbs)	Design Pressure (psig)
60 (1 QUART)	60AT-1500S	4.50	12.50	1"-600# RF FLANGE	17	1500

- ALL WETTED PARTS ARE STAINLESS STEEL, GRADE 316L.
- 1500 PSI DESIGN PRESSURE WITH A 4X SAFETY FACTOR.
- BLADDER MATERIAL IS AROMTIC RESISTANT BUNA-N; OTHER COMPOUNDS ARE AVAILABLE.



### PARTS LIST:

Item	Qty	Description
1	1	SHELL
2 *	1	BLADDER ASS'Y
3	1	GAS END PLUG
4	1	LOCK NUT
5	1	SPACER
6	1	WASHER
7	1	ANTI-EXTRUSION RING
8 *	1	O-RING
9 *	1	DYNA SEAL
10	1	JAM NUT
11	1	VALVE GUARD

\*Recommended replacement parts.

**young engineering manufacturing, inc.**

132 West Chestnut Avenue, Monrovia, CA 91016

PH. (626) 359-6262 FAX (626) 303-6156