

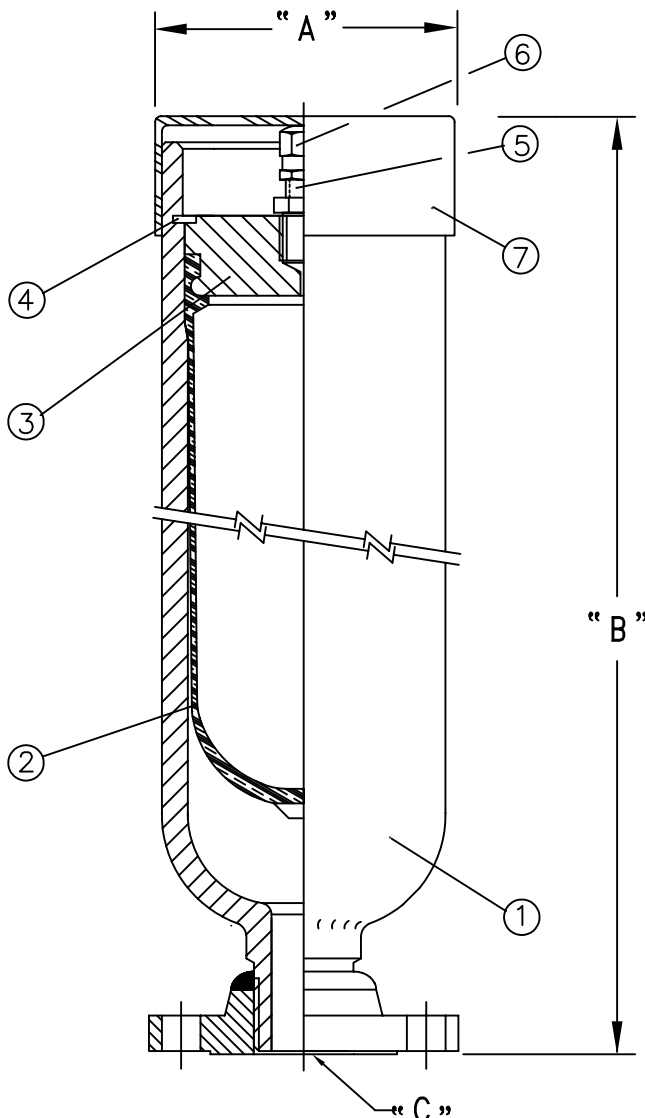
DATA SHEET AT-01SF

APPENDAGE TOP REPAIRABLE PULSATION DAMPENER

2000psi

Nominal Size (Cl)	Model Number	"A" Dia. (In.)	"B" OAH. (In.)	"C" Fluid Port Connectors	Weight (Lbs.)	Design Pressure (psig)
15	15AT-2000SF	2.38	8.25	1/2"-1500# RF ANSI	10	2000
30	30AT-2000SF	3.50	8.30	3/4"-1500# RF ANSI	16	2000

- ALL WETTED PARTS ARE STAINLESS STEEL, GRADE 316L.
- 2000 PSI DESIGN PRESSURE WITH A 4X SAFETY FACTOR.
- BLADDER MATERIAL IS AROMATIC RESISTANT BUNA-N; OTHER COMPOUNDS ARE AVAILABLE.
- OTHER FLANGE RATINGS ARE AVAILABLE (150, 300 AND 600#)
- TOP REPAIRABLE DESIGN.



PARTS LIST:

Item	Qty	Description
1	1	SHELL
2*	1	BLADDER
3	1	HEAD
4	1	RETAINING RING
5	1	GAS VALVE
6	1	CAP
7	1	PROTECTIVE COVER

*Recommended replacement parts.



**young
engineering
manufacturing, inc.**

560 West Terrace Drive, San Dimas, California 91773-2914
Ph 909.394.3225 Fax 909.394.3006 Em yemi@youngeng.com